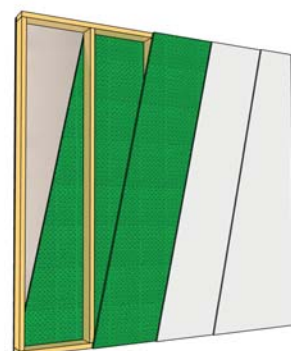


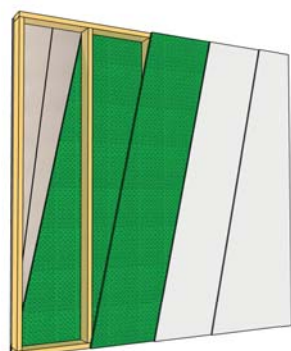
Wall Assemblies

New Construction STC 51*



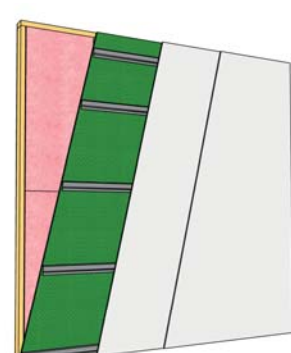
Type X Drywall 15.9 mm (5/8")
SONOpan 19 mm (3/4")
 Wood studs 50.9 mm x 139.7 mm (2" x 6") at 610 mm (24") c.c.
SONOpan 19 mm (3/4")
 Type X Drywall 15.9 mm (5/8")
 Type X Drywall 15.9 mm (5/8")

New Construction STC 53*



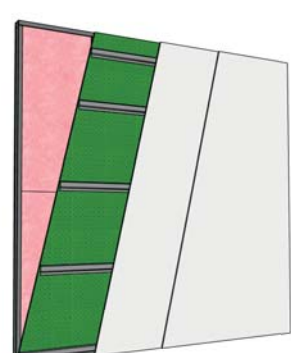
Type X Drywall 15.9 mm (5/8")
 Type X Drywall 15.9 mm (5/8")
SONOpan 19 mm (3/4")
 Wood studs 50.9 mm x 139.7 mm (2" x 6") at 610 mm (24") c.c.
SONOpan 19 mm (3/4")
 Type X Drywall 15.9 mm (5/8")
 Type X Drywall 15.9 mm (5/8")

New Construction STC 56*



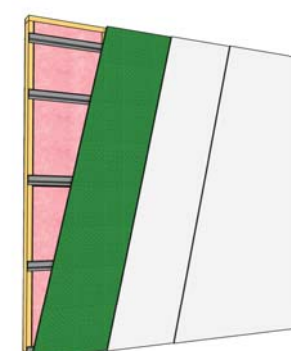
Type X Drywall 15.9 mm (5/8")
 Wood studs 50.9 mm x 101.6 mm (2" x 4") at 610 mm (24") c.c.
 R-12 Batt Insulation
SONOpan 19 mm (3/4")
 Resilient Channels at 610 mm (24") c.c.
 Type X Drywall 15.9 mm (5/8")
 Type X Drywall 15.9 mm (5/8")

New Construction STC 56*



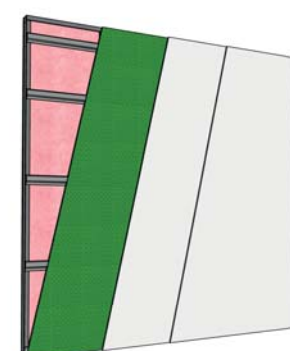
Type X Drywall 15.9 mm (5/8")
 Metal studs 50.9 mm x 101.6 mm (2" x 4") at 610 mm (24") c.c.
 R-12 Batt Insulation
SONOpan 19 mm (3/4")
 Resilient Channels at 610 mm (24") c.c.
 Type X Drywall 15.9 mm (5/8")
 Type X Drywall 15.9 mm (5/8")

New Construction STC 58*



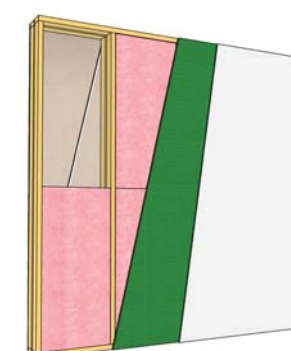
Type X Drywall 15.9 mm (5/8")
 Wood studs 50.9 mm x 101.6 mm (2" x 4") at 610 mm (24") c.c.
 R-12 Batt Insulation
 Resilient channel at 610 mm (24") c.c.
SONOpan 19 mm (3/4")
 Type X Drywall 15.9 mm (5/8")
 Type X Drywall 15.9 mm (5/8")

New Construction STC 58*



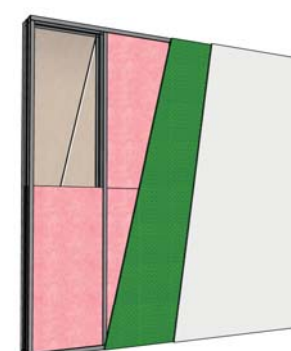
Type X Drywall 15.9 mm (5/8")
 Metal studs 50.9 mm x 101.6 mm (2" x 4") at 610 mm (24") c.c.
 R-12 Batt Insulation
 Resilient channel at 610 mm (24") c.c.
SONOpan 19 mm (3/4")
 Type X Drywall 15.9 mm (5/8")
 Type X Drywall 15.9 mm (5/8")

New Construction STC 68*



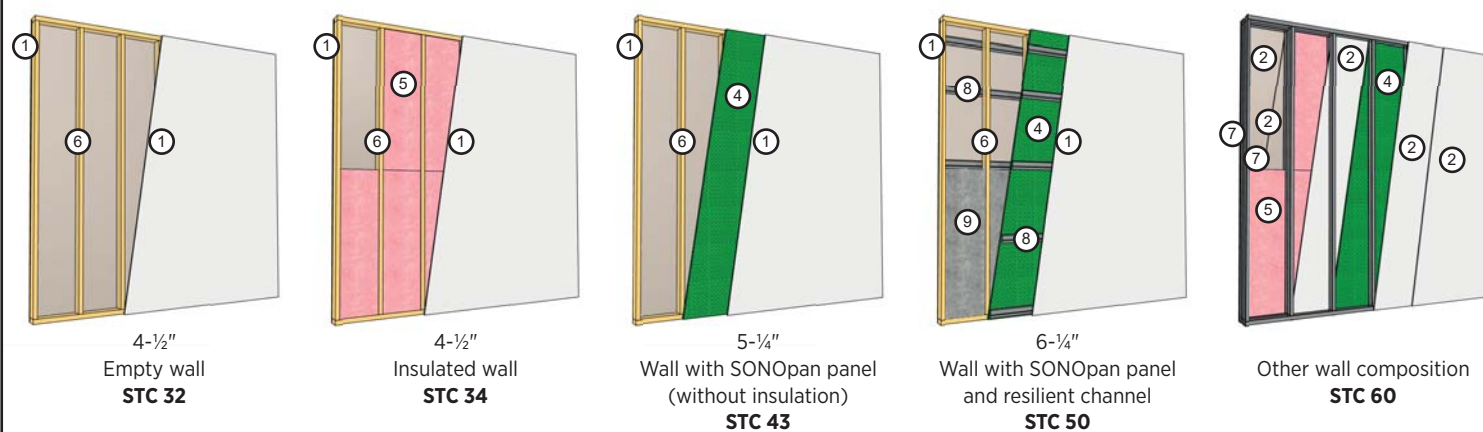
Type X Drywall 15.9 mm (5/8")
 Type X Drywall 15.9 mm (5/8")
 Wood studs 50.9 mm x 101.6 mm (2" x 4") at 610 mm (24") c.c.
 R-12 Batt Insulation
25.4 mm (1") Air space
 R-12 Batt Insulation
 Wood studs 50.9 mm x 101.6 mm (2" x 4") at 610 mm (24") c.c.
SONOpan 19 mm (3/4")
 Type X Drywall 15.9 mm (5/8")

New Construction STC 68*

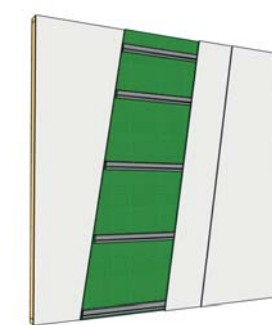


Type X Drywall 15.9 mm (5/8")
 Type X Drywall 15.9 mm (5/8")
 Metal studs 50.9 mm x 101.6 mm (2" x 4") at 610 mm (24") c.c.
 R-12 Batt Insulation
25.4 mm (1") Air space
 R-12 Batt Insulation
 Metal studs 50.9 mm x 101.6 mm (2" x 4") at 610 mm (24") c.c.
SONOpan 19 mm (3/4")
 Type X Drywall 15.9 mm (5/8")

Comparative table, interior walls, wood or metal studs (New construction)



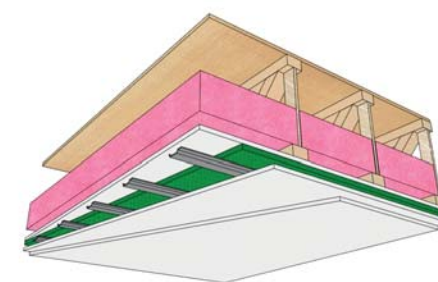
SUGGESTED RENOVATION ASSEMBLY



Walls with addition **STC 56** (Estimated value)

Existing wall:
 Drywall
 Wood or metal studs 50.9 mm x 101.6 mm (2" x 4") aux 406 mm (16") c.c.
 R-12 Batt Insulation
 Drywall

Adding:
SONOpan 19 mm (3/4")
 Resilient Channels at 610 mm (24") c.c.
 Type X Drywall 15.9 mm (5/8")
 Type X Drywall 15.9 mm (5/8")



Ceiling with addition **STC56** (Estimated value)

Existing ceiling:
 Open joist 300 mm (12")
 Batt Insulation (R-20 min.)
 Drywall

Adding:
SONOpan 19 mm (3/4")
 Resilient Channels at 610 mm (24") c.c.
 Type X Drywall 15.9 mm (5/8")
 Type X Drywall 15.9 mm (5/8")

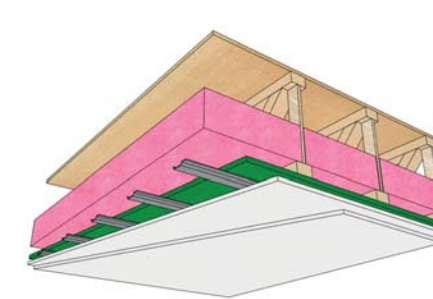
For suggested assemblies in this brochure, confirming sound transmission indices (FSTC), the mention "F" means "Field" for measurements taken on site.

Systems offering a fire resistance of 60 minutes according to CAN / ULC S-101:

UL designs: U309, U314, U423, U465
 ULC designs: W301, W415, and W453.

1 - This assembly can be applied to a load-bearing wall, in accordance with the National Building Code of Canada (2015) for this type of construction.

New Construction STC 56*



Open joist 300 mm (12")
 Batt Insulation (R-20 min.)
SONOpan 19 mm (3/4")
 Resilient Channels at 610 mm (24") c.c.
 Type X Drywall 15.9 mm (5/8")
 Type X Drywall 15.9 mm (5/8")



* The indicated STC / FSTC performances on drawings can vary according to the physical properties of the materials in the assembly and their installation.



ici-here.ca

- 1 Drywall panel 1/2"
- 2 Type X Drywall 5/8"
- 3 Air space 1"

- 4 SONOpan panel
- 5 Mat insulation
- 6 Wood studs 2"x4"

- 7 Metal studs 2-1/2"
- 8 Resilient channel
- 9 Blowing insulation

MSL

MSLfibre.com

MSL

MSLfibre.com