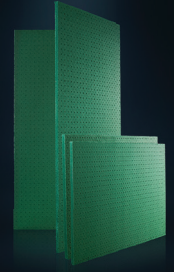


# EXCEPTIONAL SOUNDPROOFING SOLUTION

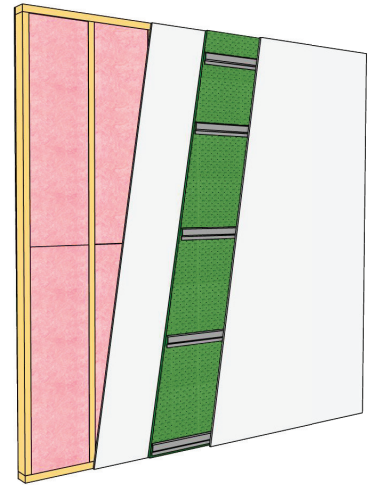
## Basement Rentals, Condos & Townhomes

Exceptional Soundproofing  
**SONOPAN**  
Noise STOP Technology™



- 1** Fasten SONOpan II to existing drywall using drywall screws with washers, 12" o/c (12" apart at the perimeter and center of the panel).
- 2** Fasten the resilient channels to the studs every 24" and according to the manufacturer's specifications.
  1. Fasten the first channel 2" from the ground.
  2. Fasten the second channel 24" from the floor.
  3. Fasten the last channel 6" from the ceiling.
- 3** Fasten the first row of drywall to the resilient channels using drywall screws according to the manufacturer's specifications.

Install second row of drywall according to the manufacturer's specifications.



### **CORRECTIVE SOLUTION**

<b>Add SONOpan II</b>	19.05 mm (3/4")
<b>Add Resilient channels</b>	12.7 mm (1/2") at 610 mm o.c. (24" o.c.)
<b>Add Drywall</b>	15.86 mm (5/8")
<b>+/- ASTC 55</b>	